

# Colorado Community Animal Response Training

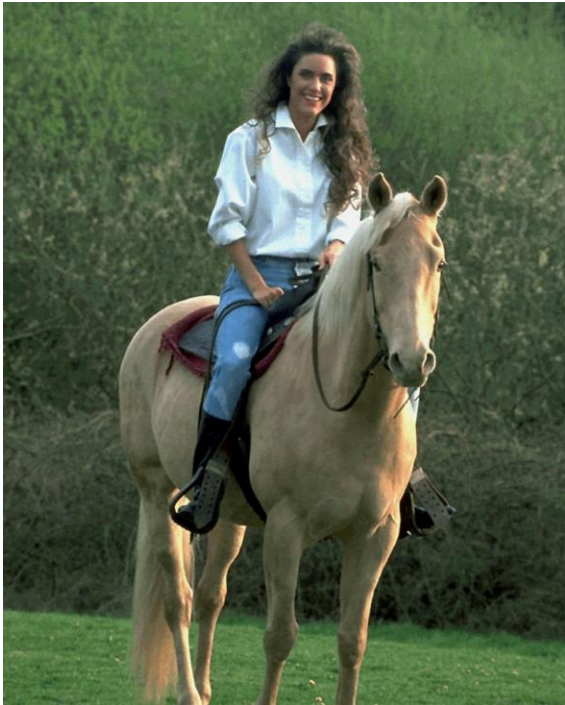
Module 1: Overview of Animal Emergency Management Issues

Module 2: Overview of the National Incident Management System

Module 3: Hazards, Vulnerabilities, Consequences and Risks

Module 4: Colorado and Community Emergency Management Plans

# About PetAid Colorado



1. PetAid Animal Hospital (formerly Harrison Memorial Hospital)
2. Disaster Services Program
3. Care Grants
4. Home Outreach Pet Exams (HOPE)

**Making Colorado a better place for animals and people!**

# Disaster Services Program

1. Community Capacity Building
  - Local program support (CART)
  - Training and technical assistance
  - Preparedness
2. Coordination of Colorado Veterinary Medical Reserve Corps (CO VMRC)
3. State Emergency Operations Center (SEOC) support – ESF 6

# Why are we here today?

To provide the introductory level knowledge, skills and abilities that will enable animal services professionals and community volunteers to begin to participate in their Community Animal Response Team (CART).



2008 Missouri Flooding/FEMA



2011 Minot, ND Flooding/FEMA

# Training Objectives

At the end of this training program, you will be able to:

- List the impacts animal emergency issues have on our nation, state and communities
- Identify the core features of the National Incident Management System
- Describe the key processes involved in creating a local animal emergency plan
- Identify the essential tasks in animal emergency response
- Describe the basic animal handling skills and personal safety concerns
- Describe the key components of responder safety related to hazards
- Identify the basic components of a personal, family, or business emergency plan
- Identify additional resources for training related to general and animal emergency management and response

# Training and Credentialing

Local level training and credentialing standards:

- Set by CART program and local emergency management agency

Recommended *minimum* training

- CART Introductory Training
- ICS-100 Incident Command System and IS-700 National Incident Management System (available on-line via FEMA Emergency Management Institute)
- May be additional requirements for supervisory positions or technical specialties





---

MODULE 1:

OVERVIEW OF ANIMAL EMERGENCY MANAGEMENT ISSUES

# Module 1: Learning Objectives

At the end of this unit, you will be able to:

1. List seven key emergency issues related to animals
2. Describe the potential impacts of an animal health emergency related to:
  - the economy;
  - national security; and
  - our food supply.
3. Describe the overall scope of animal demographics in Colorado and the nation



# What are the animal concerns in disasters?



1. Public safety
2. Public and animal health
3. Food security
4. Animal welfare
5. Service/police animals
6. Captive animal populations
7. Wildlife/environment

# Public Safety Impacts

## People will risk their lives to protect animals

- Can put themselves and responders at risk
- Redeployment of law enforcement resources
- This is not just a companion animal issue



**Operation Pet Rescue: 1996 Weyauwega, Wisconsin**

The **Weyauwega derailment** was a railroad accident that occurred in Weyauwega, Wisconsin, USA, in the early morning hours of March 4, 1996. The derailed train was carrying a large quantity of hazardous material, which immediately caught fire. The fire, which involved the train cars and an adjacent feed mill, burned for more than two weeks after the actual derailment, resulting in the emergency evacuation of 2,300 people for 16 days, including the entire city of Weyauwega, with about 1,700 evacuees.

Residents who were worried about pets that they left behind started re-entering the 1.5 mile evacuation zone within two days of the derailment to rescue them. Just over half the population evacuated without their pets. The acting fire chief declared the situation too dangerous to the public and emergency personnel to mount a pet rescue. Fearing a worse disaster, his decision was overruled by the Governor's office; the Emergency Operations Center organized an official pet rescue to take place on March 8. The National Guard was activated to help with the recovery efforts. Using flak jackets and armored personnel carriers, they escorted pet owners to their residences to rescue their pets, then stayed to help fire crews with the accident recovery.

# Public Health and Zoonosis

A zoonosis is any infectious disease that can be transmitted from non-human animals, both wild and domestic, to humans or from humans to non-human animals.

Public health and animal health issues intersect broadly

Veterinary professionals are essential in addressing zoonotic disease issues during disasters



# Examples of Zoonotic Diseases

Rabies

West Nile Virus

HIV

H1N1

Anthrax

Brucellosis

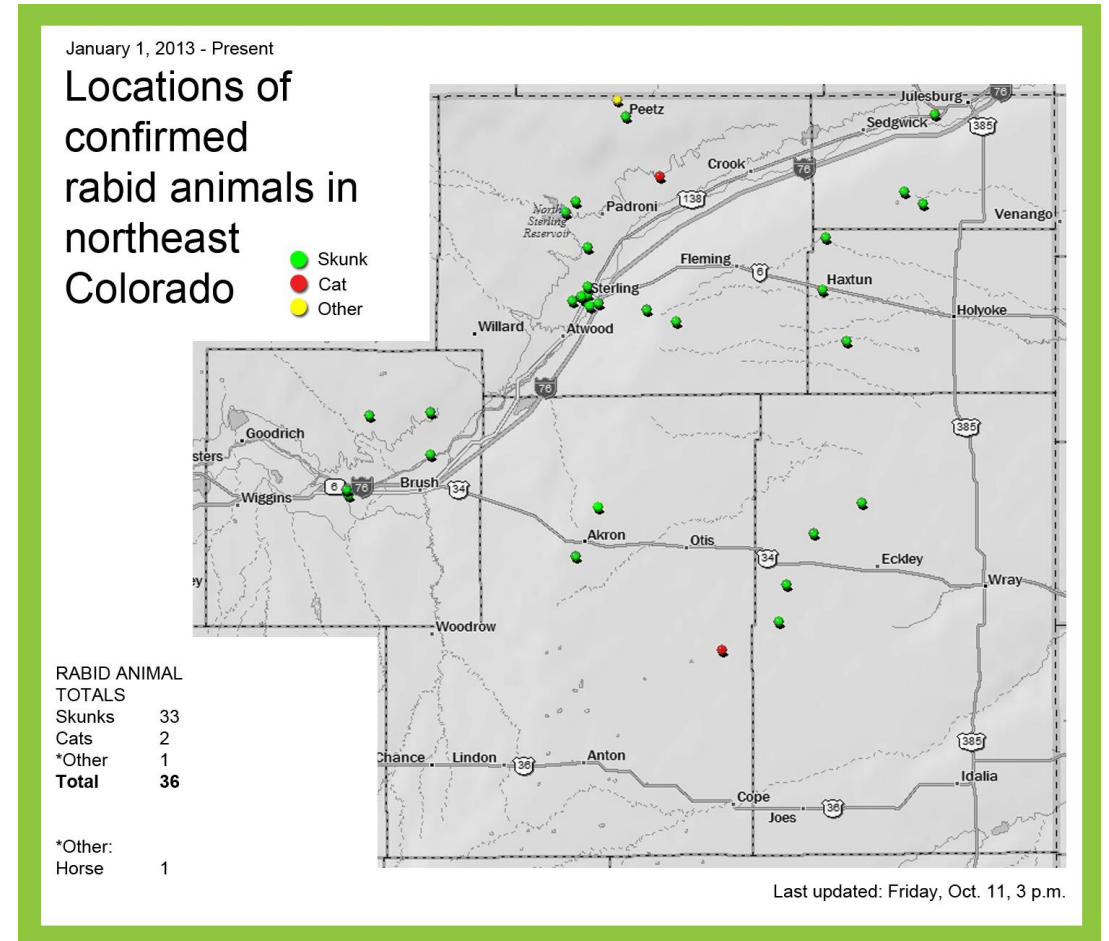
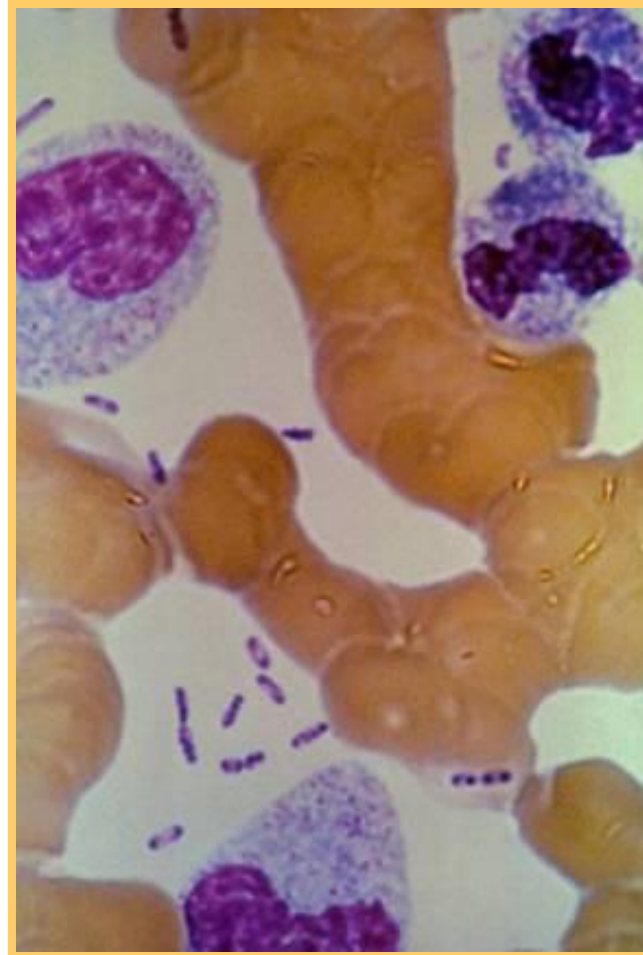
Tuberculosis

Guardia

Salmonella

Influenza

Plague





# PETS Act

## Pet Evacuation and Transportation Act of 2006-signed into law October 2006

- Stafford Act amendment
  - Requires state and local plans for household pets and service animals
  - Allows FEMA cost-sharing for services in support of people with household pets and service animals
  - Allows FEMA director to make contributions for preparedness



2012 Hurricane Sandy – photo by Alec Perkins

# Animal Welfare





# Service Animals



[disabilityrightsflorida.org](http://disabilityrightsflorida.org)

- Seeing-eye
- Hearing assistance
- Hospital visits
- Mobility assistance
- Medical warning
  - Seizures
  - Medical detection
- Mental health therapy



[ponybox.com](http://ponybox.com)



# Law Enforcement and Emergency Response Animals



New York City, NY, September 15, 2001 -- Urban Search and Rescue teams work with their dogs to uncover victims following Tuesday's attack on the World TradeCenter.

Photo by Andrea Booher/ FEMA News Photo

## Canine

- Enforcement/patrol
- Drug and explosive detection
- Search and rescue



## Equine

- Patrol/search
- Crowd control



# Captive/Concentrated Animal Populations

Laboratory animals

Zoos, sanctuaries, wildlife parks

Commercial breeding/pet retail

Kennels

Veterinary hospitals





# Native Wildlife

Impacts on critical environments or endangered species

Impacts of animal diseases

- Brucellosis  
(Yellowstone)
- Foot and Mouth  
Disease
- West Nile Virus
- H1N1 (Swine Flu)



# Animals in the State of Colorado

Colorado (2009 estimate) 5+ million people

- 2 million households
- Up to 60% of households with pets
- 2.5 animals per household
- 3+ million dogs, cats, and birds
- Add rabbits, rodents, ferrets, reptiles, etc.



# Colorado Horses & Other Livestock Species

Horses: 256,000+

All Cattle: 2,480,000

- Mature dairy cows: 130,000
- Mature beef cows: 710,000+

Sheep & goats: 420,000+

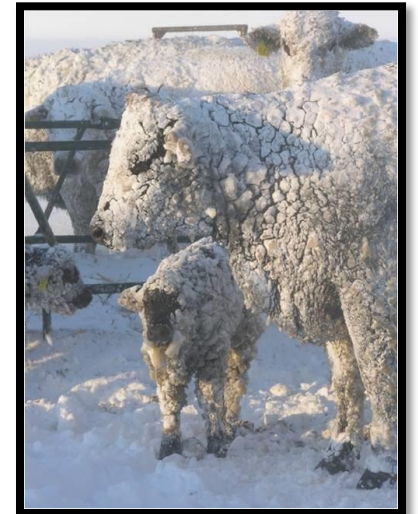
Poultry: <20,000,000 (variable)

Swine: 770,000

Captive deer, elk, bison

Llamas, alpacas

Emu, ostrich







---

## MODULE 2:

# OVERVIEW OF THE NATIONAL INCIDENT MANAGEMENT SYSTEM

# Module 2: Learning Objectives

At the end of this unit, you will be able to correctly identify:

1. The basic priorities and principles of emergency management
2. The role of the local
  1. emergency manager;
  2. emergency operations center; and
  3. emergency operations plan
3. The basic structure and functions of National Incident Management System (NIMS), including the Incident Command System (ICS).



# Animal Emergency Management Systems



# What is a disaster?

By definition, a disaster is, "an occurrence causing widespread destruction and distress, a grave misfortune, a total failure..."

A disaster is often further defined as being either a man-made or natural event that results in death, injury, and property damage which cannot be managed through normal, routine channels.

A disaster requires immediate and effective intervention of multiple government and private sector organizations to help meet the needs of the community and area just after the disaster occurs and the area and people begin to recover.

A disaster results in departments or agencies being unexpectedly torn from their standard operating procedures or are required to obtain resources outside their normal authority.

**"The only thing harder than explaining why you need to prepare for a disaster, is having to explain why you didn't."**

# Missions of Emergency Management

1. Prevention, protection and mitigation
2. Preparedness
3. Response
4. Recovery



2010 DIA/photo by Michelle and Jeff Strecker

# Emergency Management Priorities

1. Protection of human life/health
2. Protection of property
3. Protection of the environment

**For many people,  
animals are the  
top property  
priority**



**Providing animal emergency  
management services allows  
all of these priorities to be  
achieved**



# All-Hazards Emergency Management



sheriff.co.pueblo.co.us

Flexible to adapt to all emergency situations

Standardized to improve overall response and interoperability.

**Comprehensive  
Emergency  
Management**

*Comprehensive  
Emergency  
Management*

# Local Emergency Management

## Emergency Manager

- Coordinate planning/preparedness efforts
- Manage local emergency operations center

## Emergency Operations Plan

- Responsibilities, key policies
- Government & Non-Governmental Organizations (NGO)
- Mechanisms for outside assistance

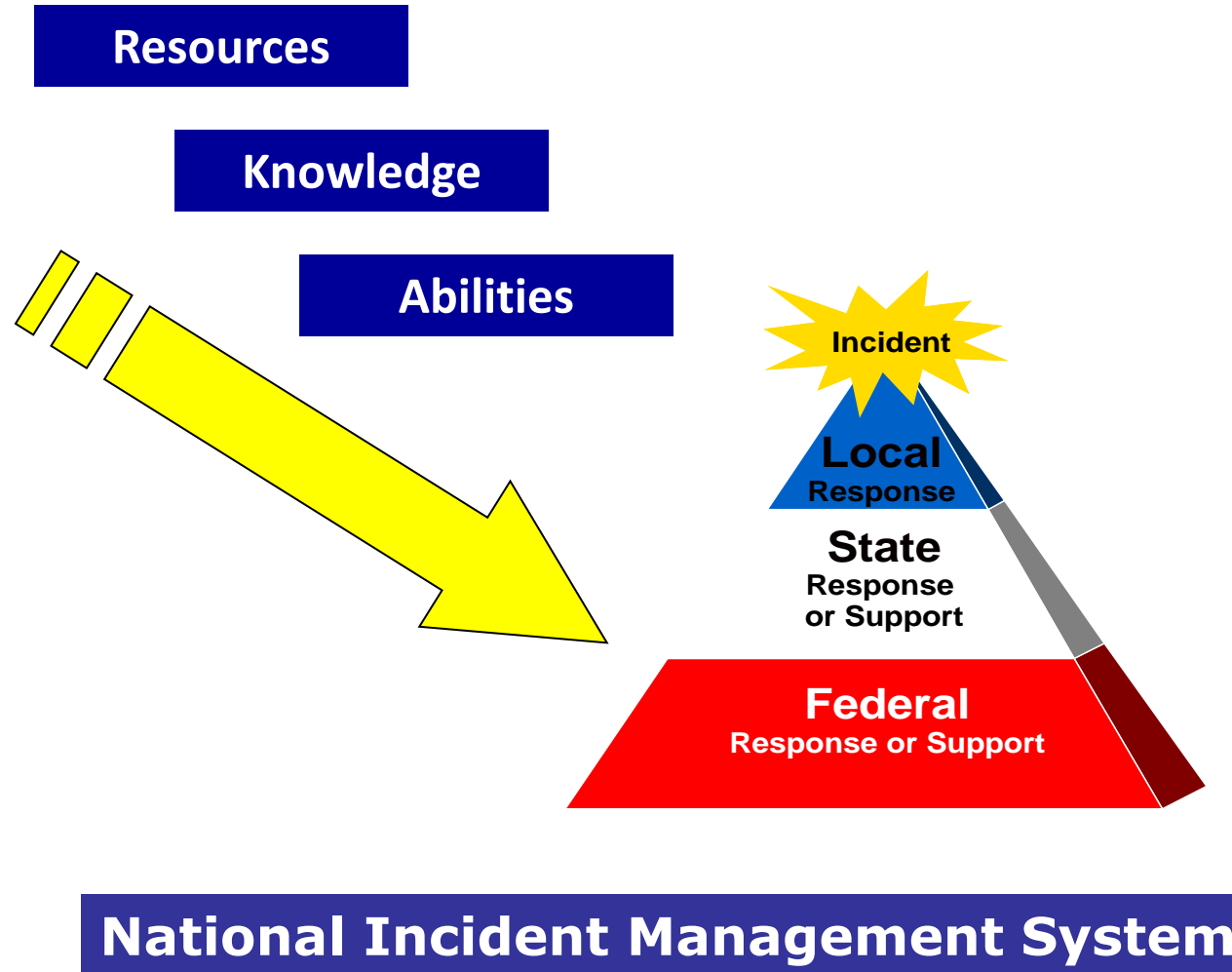
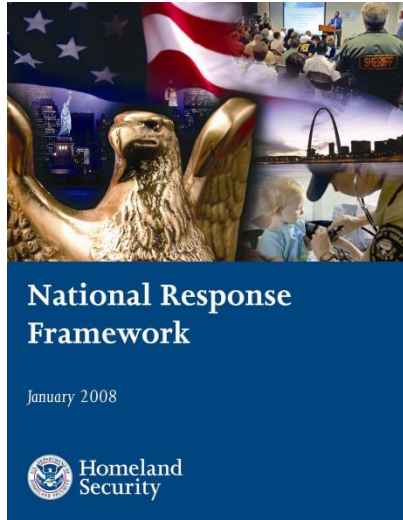
## Emergency Operations Center (EOC)

- information gathering
- priority setting
- resource coordination






Colorado Springs EOC

# NIMS and NRF Relationship

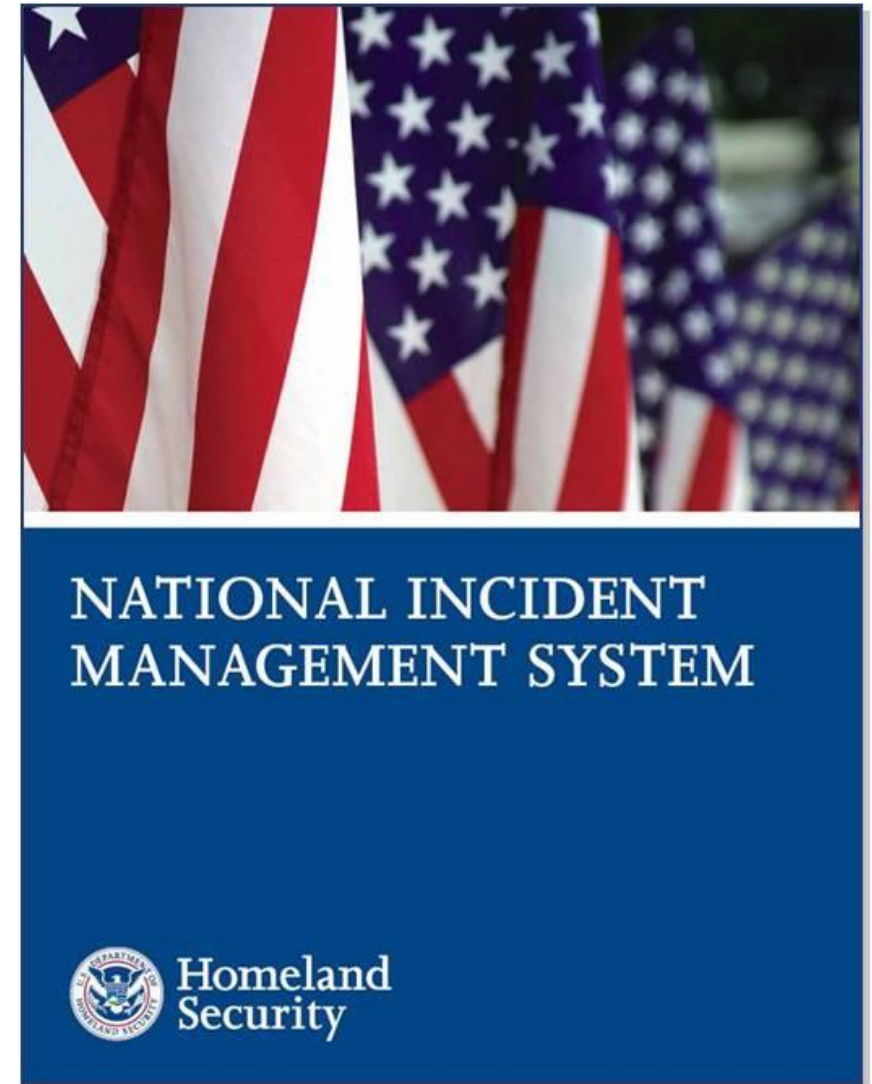




# Components of NIMS

1. Command & Management 
2. Preparedness 
3. Resource Management 
4. Communications and Information Management
5. Supporting Technologies
6. Ongoing Management and Maintenance

<http://www.fema.gov/emergency/nims>



# Incident Command



## Authority

- Depends on scope of incident
- Authority can be either an Incident Commander or shared command

## Management system

- Incident management teams can manage any event

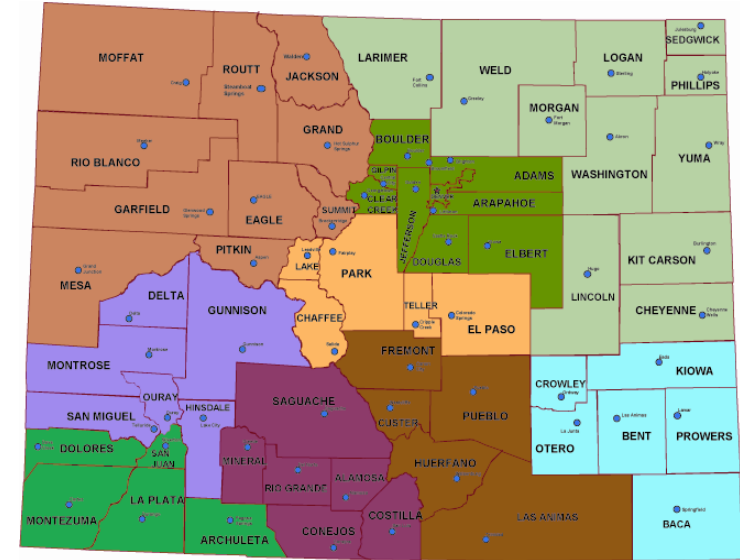
# Statutory Authority

## Legal Authority is basis for incident command

- **Local animal authorities**
  - Law enforcement
    - Animal control
    - Public health
    - Emergency management
- **State animal authorities**
  - State veterinarian
  - Public health
  - Emergency management
  - Wildlife agencies
  - Public safety

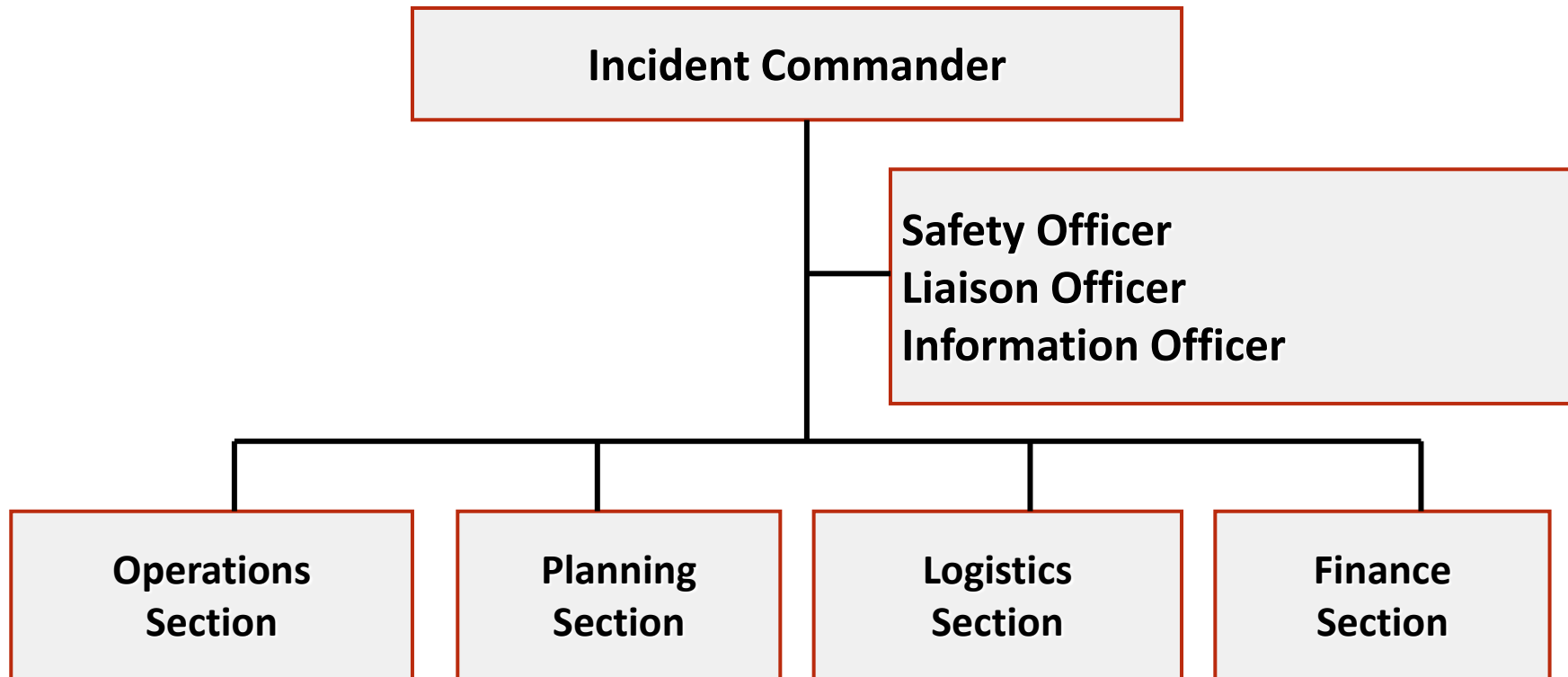
## Federal animal authorities

USDA: livestock diseases  
HHS: public health impacts  
DHS: emergency management  
DOJ: Terrorism



**Colorado's 9 Homeland Security Regions**

# Basic ICS Command Structure



**IS-100 Incident Command Systems**  
*<http://training.fema.gov/IS/crslist.asp>*



# Multi-Agency Coordination:

## *National Response Plan Emergency Support Functions (ESF)*

ESF1: Transportation

ESF2: Communications

ESF3: Public works and engineering

ESF4: Firefighting

ESF5: Emergency management

**ESF6: Mass care, housing, and human services**

ESF7: Resource support

ESF8: Public health and medical services

ESF9: Urban search and rescue

ESF10: Oil and hazardous materials response

**ESF11: Agriculture and natural resources**

ESF12: Energy

ESF13: Public safety and security

ESF14: Long term community recovery and mitigation

ESF15: External affairs



Colorado State EOC

# Preparedness

1. Planning
2. Training and Exercises
3. Standards and Certification
4. Mutual Aid
5. Information and Publications



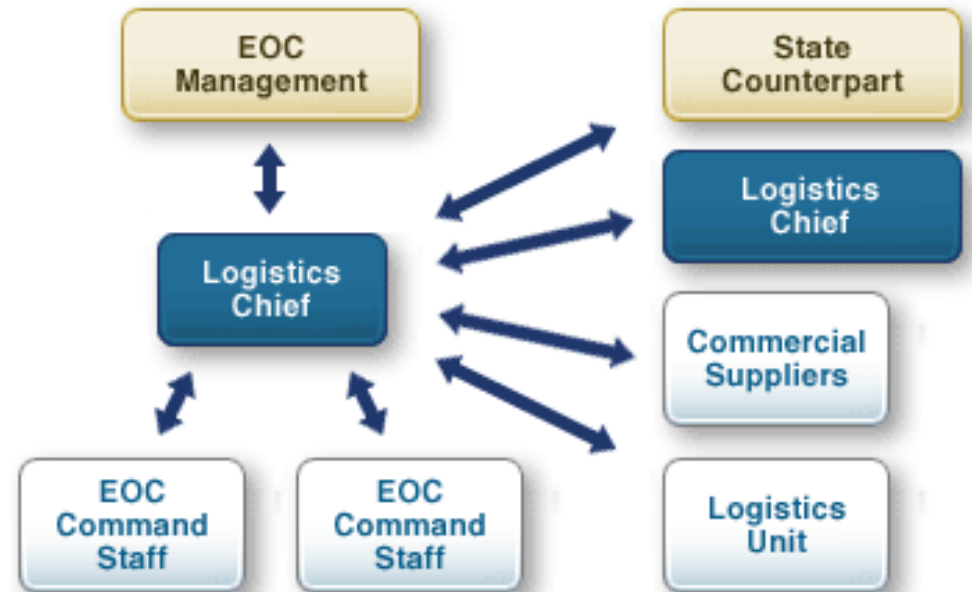
U.S. Army Corps of Engineers

# Resource Management

Identifies, types and credentials resources

1. Individual credentialing
2. Resource typing

Necessary for developing, finding, mobilization, and tracking resources.



fema.gov

[http://www.fema.gov/emergency/nims/mutual\\_aid](http://www.fema.gov/emergency/nims/mutual_aid)



# Foundations of Resource Management

**Interoperable  
Resources**

**Resource  
Typing**

**Individual  
Credentialing**

**Target  
Capabilities  
& Task Lists**

**Standardized  
Training  
Programs**

**National Incident Management System  
National Response Framework**



---

## Module 3:

### Hazards, Vulnerabilities, Consequences and Risk

# Module Objectives

At the end of this unit, participants will be able to:

1. Define the planning terms hazard, vulnerability, consequence and risk.
2. Describe the basic risk assessment process
3. List the recognized Colorado hazards

# Definitions

## Hazards

- Threats of all types

## Vulnerability

- People, property of systems that are subject to hazards

## Consequence

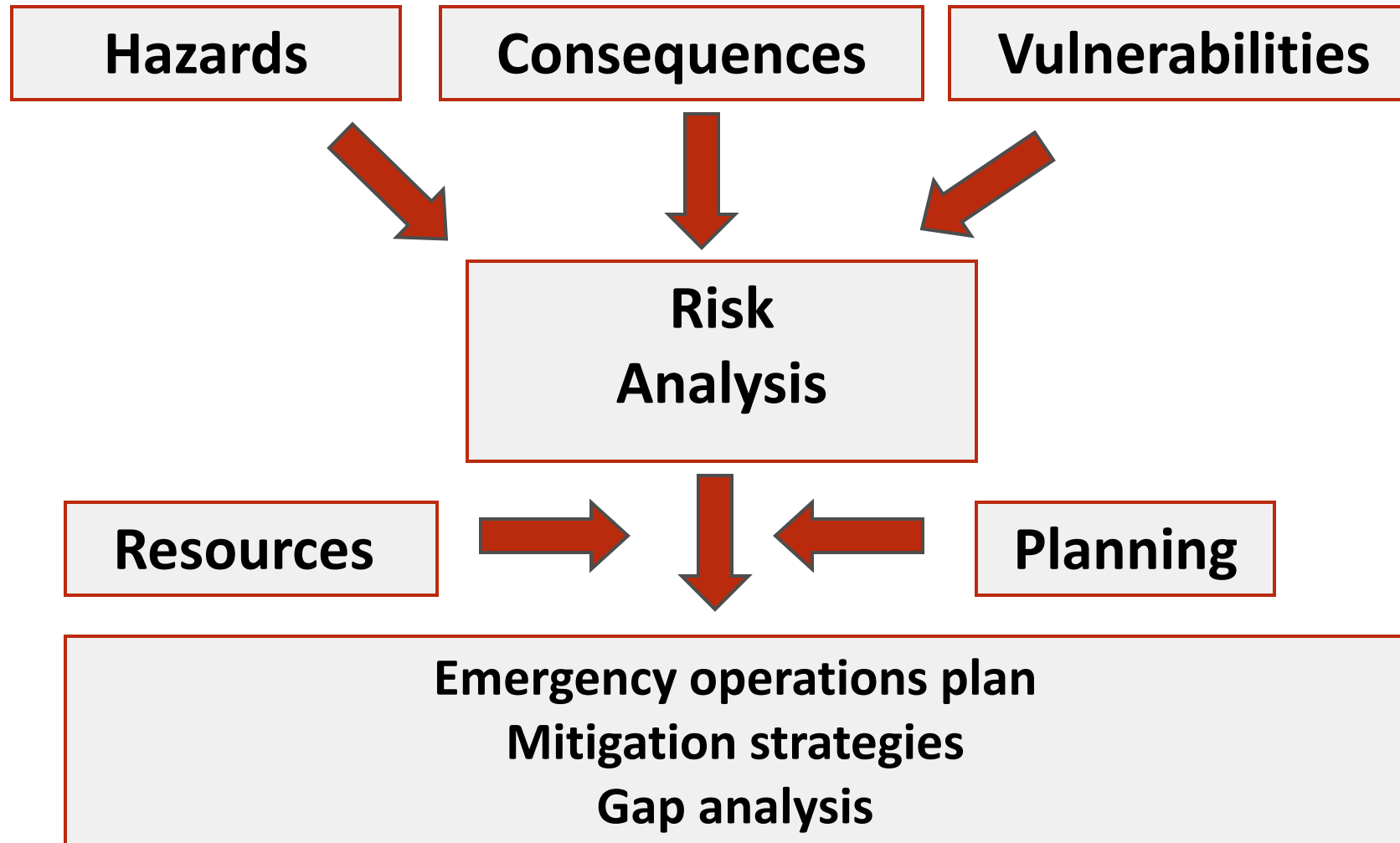
- Degree of potential impact

## Risk

- Overall sum of hazard, vulnerability, and consequence



# Basic Planning Elements



# What disasters have you seen?



Best Friends Animal Society

Photo by Kevin Tiqui

# Colorado Weather Hazards

- Tornado
- Blizzard
- Ice storms
- Hail
- Wind
- Lightning
- Mudslide
- Avalanche
- Floods
- Drought (wildfire)





# Geological Hazards



## Earthquake

- Trinidad area 2011, series with largest at 5.3
- Rocky Mountain National Park
  - November 7, 1882
  - Estimated near 6.6 Richter
- Latest estimates max impact =
  - Possible 6.5 - 7.5 earthquake
  - \$24 billion damages, 800 fatalities

## Volcanic eruption

- Mount Saint Helens

## Tsunami (Pacific coastal)



# Wildfire

Natural, Accidental, Intentional

- Low to high impact
- Usually April-October

Risk magnified by large wilderness-urban interface (WUI) areas

2012 & 2013 Colorado wildfire season

Wildfires are a threat every year



# Biological Hazards

Foreign animal diseases

Zoonotic diseases

Emerging diseases

People

Livestock

Crops

Wildlife

Companion and other animals





# Animal Welfare Emergencies

Animal “hoarders” and large-scale cruelty

- Dozens or even hundreds of animals kept under terrible conditions
- May exceed local capacity to provide care





# Other Hazards

## Accidental

- Hazardous Chemical spills/releases
- Nuclear/radiological hazards
- Infrastructure failure
  - Power blackouts, dams, bridges, buildings
  - Accidental explosions
- Transportation accidents
- Major urban fires



Alaska National Guard



# Intentional Threats

## CBRNE:

- Chemical
- Biological
  - People, animals, crops
- Radiological
- Nuclear
- Explosive

## Extortion, hoaxes & fraud

- Market manipulation

## Cyber Attack





---

MODULE 4:

COLORADO AND COMMUNITY ANIMAL EMERGENCY PLANS

# Module Objectives:

At the end of this unit, participants will be able to:

1. Identify the PetAid Colorado Disaster Services Program
2. Identify where animal issues are addressed in the Colorado Emergency Operations Plan
3. List the potential missions for Community Animal Response Team (CART) programs
4. List at least 10 examples of community agencies or organizations that should participate in CART programs
5. List the basic steps in organizing CART-type programs
6. Describe the use of a planning matrix for developing a local animal/agricultural annex

# PAC DS Advisory Council

1. Colorado Division of Emergency Management
2. Colorado Department of Agriculture
3. Colorado Department of Public Health & Environment
4. Colorado State University
5. Colorado Veterinary Medical Association
6. Colorado Association of Certified Veterinary Technicians
7. Colorado Federation of Animal Welfare Agencies
8. Citizen Corps/Medical Reserve Corps
9. United States Department of Agriculture



# Colorado Emergency Operations Plan (EOP)

Coordinated by the Colorado Division of Emergency Management

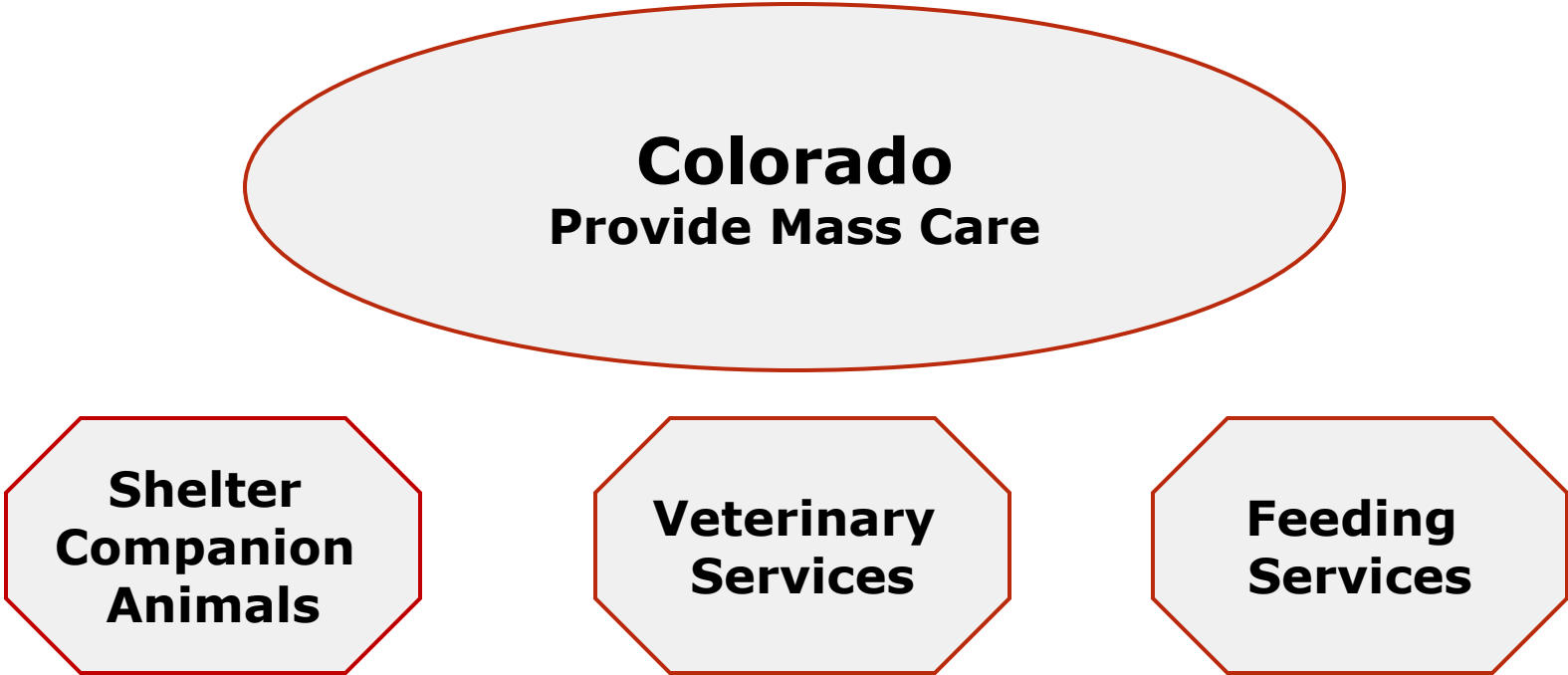
Plan available online at:

[www.dola.colorado.gov/dem/plans/plans.htm](http://www.dola.colorado.gov/dem/plans/plans.htm)

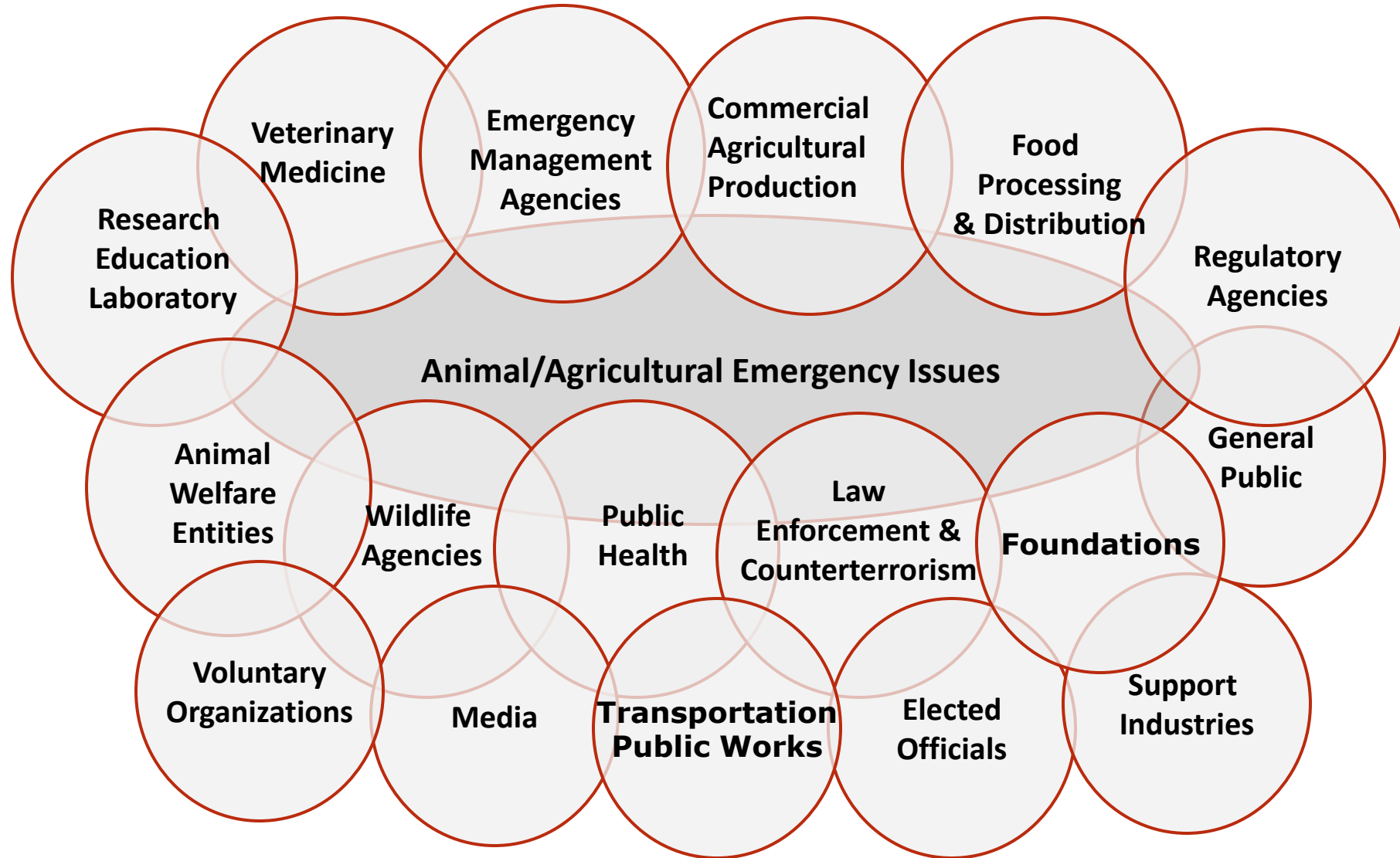


Includes model community animal emergency plan

# Colorado ESF 6A



# State Multi-Agency Coordination



# Community Level Tasks



## Multi-agency coordination

- Plan development
- Interoperable communications

## Resource development

- Equipment & supplies

## Training

- Professionals
- Volunteers
- Credentialing

## Citizen preparedness



# Local Multi-Agency Coordination

- Local Emergency Managers
- Animal care and Control agencies
- Law Enforcement
- Brand Inspectors
- Veterinary Community
- CSU Cooperative Extension
- Animal Related industry
- Fairgrounds
- Livestock Associations
- Kennels and pet Service Providers
- Livestock Producers
- Pet Breed Rescue and Associations
- Community Public Health
- Fire and EMS
- County Mapping
- Wildlife Agencies and Zoos
- Concerned Individuals

Bring all parties to the table



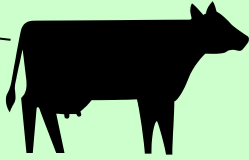
# Why develop plans?



**In preparing for  
battle I have always  
found that plans are  
useless, but planning  
is indispensable.**

*Dwight D. Eisenhower*

Feedlot  
5,000 head



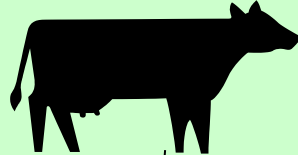
Exotic animal  
sanctuary



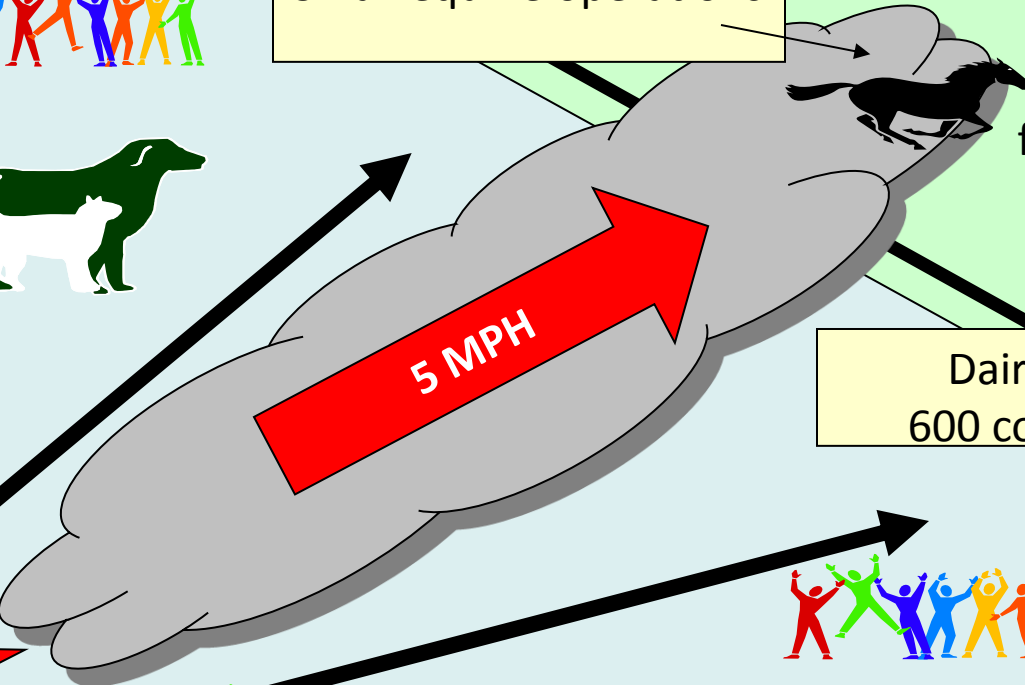
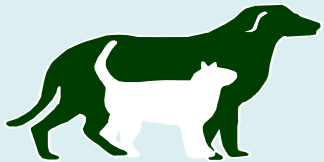
Interstate Highway



Small equine operations



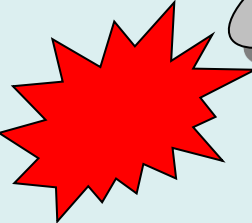
Rural Area



Dairy  
600 cows



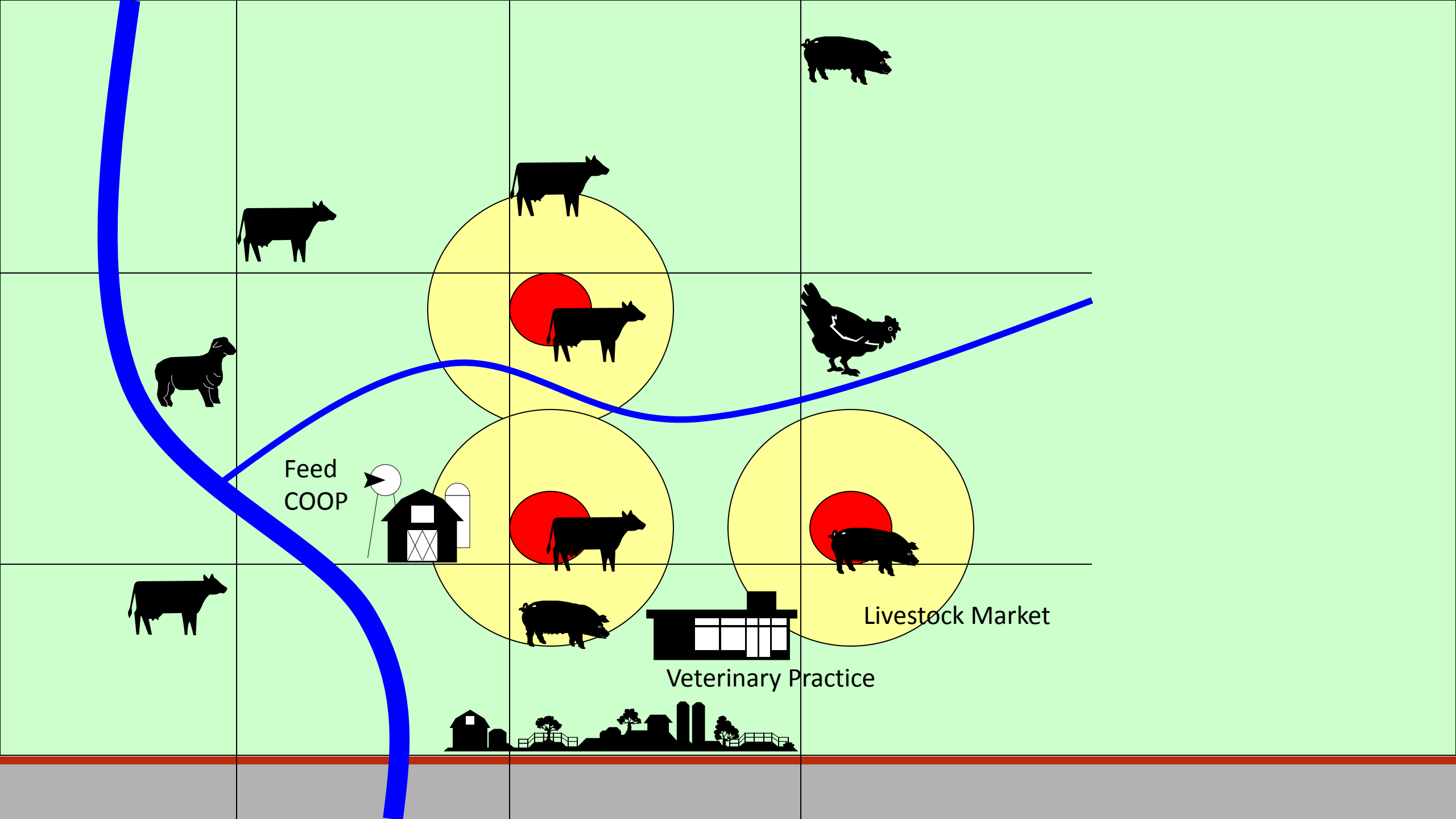
Large swine  
operation  
20,000



Town Area







# Local Planning Matrix for Animal Issues

Table of functions vs.  
community resources

Combine with risk assessment

Basis for building a written plan

- lead (L)
- unified lead (U)
- support (S)

	<i>Evacuation</i>	<i>Rescue</i>	<i>Sheltering</i>	<i>Disposal</i>	<i>Veterinary Care</i>
Animal control	L	L	S	S	S
Animal shelter	S		L		S
Veterinary Prof.	S	S	S	S	L
CSU Extension		U		L	S
Livestock Assn.		S		S	

# Who Do We Serve...and Need to Plan For?

## All have unique needs

General population

Special needs population

- Separate shelter
- Service animals
- Companion animals

First responders (police, fire, medical, etc.)

- Service animals
- Pets



Thank you....



For more information contact Debrah Schnackenberg, Disaster Services Program Director  
at 303-539-7633 or [debrahschnackenberg@petaidcolorado.org](mailto:debrahschnackenberg@petaidcolorado.org)